

## **Vertebrate Palaeontological Excursion – Ct. Glarus /Grissons**



<https://landesplattenberg.ch/landesplattenberg-engi/>

**Supervision:** Prof. Dr. Torsten Scheyer, Dr. Gabriel Aguirre

**When?** Fall Semester 2025; **04.-05. October 2025** (weekend)

**Where?** Vertebrate Palaeontology of the Landesplattenberg Engi (Excursion into the mines), visit of Natural History Museums in Chur and in Dornbirn and Winterthur + additional stops along the way

**For whom?** The excursion is primarily aimed at advanced undergrads or Masters students. The number of excursion participants is limited to **12**.

**credit points?** BIO UZH: 1 ECTS, handing in of excursion report expected  
ERDW ETHZ: 1 ECTS, handing in of excursion report expected

**Registration?** Please register in the secretary office of the Department of Paleontology with Heike Götzmann (room KO2 E65) until Friday, September 26th, 2025 at the latest, stating:

- Surname, Name
- Matriculation number
- Telephone number
- E-mail address

**!!** Students of earth sciences UZH and ETHZ have to register additionally

**Please note:** Please make an appointment with Ms Götzmann by email or telephone via: <https://www.pim.uzh.ch/apps/cms/pageframes/staff.php?show=77>

An excursion fee of **CHF 100** must be paid when registering. The contribution covers the costs for transport, museum admissions, excursion handout and accommodation.

**For the excursion:**

We will explore the vertebrate palaeontology of the cantons Glarus and Grisons, with fossils being found in the Oligocene and the Late Triassic. As such, we planned for the two days a visit of the Natural History Museums Grisons, Dornbirn (Austria) and possibly Winterthur, a hike along the geological trail to the mines at the Landesplattenberg Engi, GL, and potential stops along the way.

All participants must also take care of private travel and/or accident insurance.

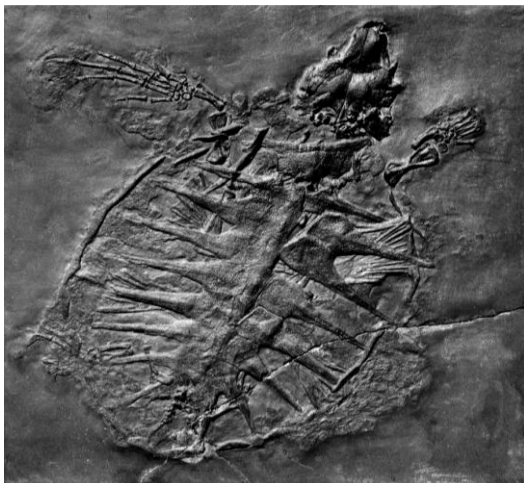
If all excursion participants and museum guides speak German, we will consider conducting the excursion in German, otherwise it will be held in English.

**What should you bring?**

- Sturdy shoes/boots
- Notebook and pen
- Rain/sun protection
- Backpack and lunch rations for both days
- camera
- necessary medication (EpiPen, etc.) – please inform us if you have a medical condition we should be aware of

During the two days, the meals are not included in the excursion fee and you have to bring your own lunches - since it's the weekend, we won't go shopping. On Saturday evening, we plan on staying at a hotel and have dinner in a restaurant.

**Departure:** Saturday, **October 04<sup>th</sup>**, 2025 at **9 am** from the entrance area of the Zoological and Palaeontological Museum (PIMUZ), Karl Schmid-Strasse 4 (UZH Main Building KO2). Return to Zurich will be on Sunday in late afternoon or early evening, depending on the traffic.



***Glarichelys*, PIMUZ**